



Bupa Foxbridge Retirement Village





Welcome to your new home

At Bupa Foxbridge, we're committed to providing flexible options to meet your needs and wishes. You can choose the lifestyle you want – you can have a busy social calendar and participate in all our events, or relax in the comfort of your new home.

Our stylish new village offers one and two bedroom villas. All our villas come with a well-designed modern kitchen, double glazed windows, and heat pump/air conditioning unit.

We want you to feel comfortable in knowing care is on hand if needed, so all our villas are fitted with 24/7 emergency alarms. Plus our Bupa Foxbridge Care Home is currently under construction, which is expected to be completed in late 2020. It will offer short and long term care options, should you need them.



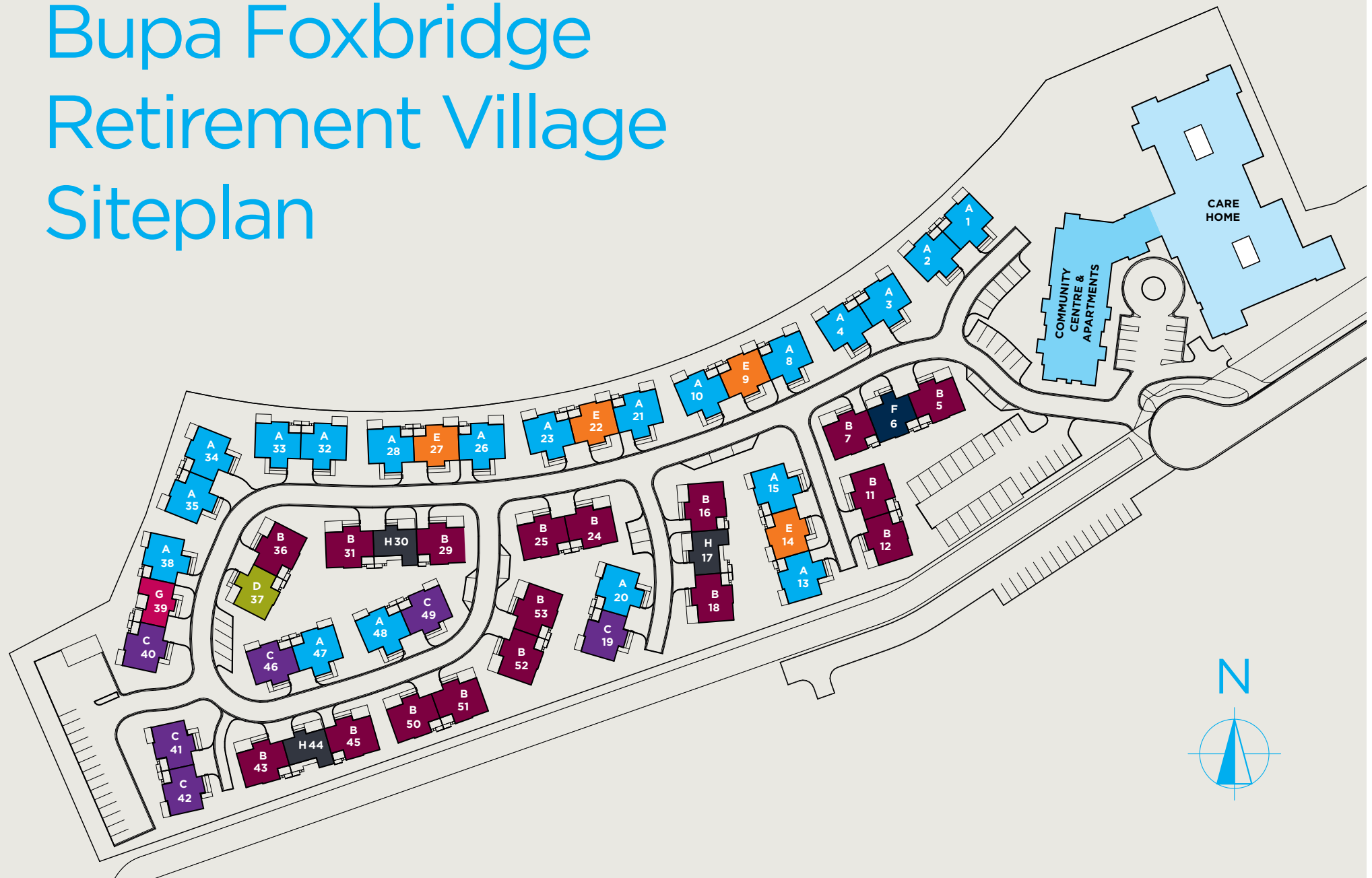
Planned Community Centre


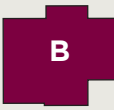
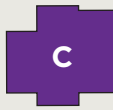





- Lounge
- Dining
- Library
- Community Kitchen
- BBQ Area
- Activities Room
- Pool table
- Petanque Court

Disclaimer: A temporary community centre will be located at villa 30, until stage 2 is complete. The temporary community centre will not include the facilities listed above, under planned community centre.



Bupa Foxbridge Retirement Village Siteplan



Apartment Type	 A	 B	 C	 D	 E	 F	 G	 H
Apartment Number	1, 2, 3, 4, 8, 10, 13, 15, 20, 21, 23, 26, 28, 32, 33, 34, 35, 38, 47, 48	5, 7, 11, 12, 16, 18, 24, 25, 29, 31, 36, 43, 45, 50, 51, 52, 53	19, 40, 41, 42, 46, 49	37	9, 14, 22, 27	6	39	17, 30, 44
One bedroom							•	•
Two bedroom	•	•	•	•	•	•		
Kitchen shape	L-shaped	Galley	L-shaped	Galley	L-shaped	L-shaped	L-shaped	Galley
Guest toilet	•	•						
Study area	•	•						

All villas have the following features:

- Double glazing
- Mechanical ventilation, including heat pump
- Fisher & Paykel suite (hob, dish drawer and oven)
- Laundry tub
- Heated towel rail
- Godfrey Hirst carpet
- Window coverings
- Targeting a six star Homestar built rating
- Fitted with 24/7 emergency alarms

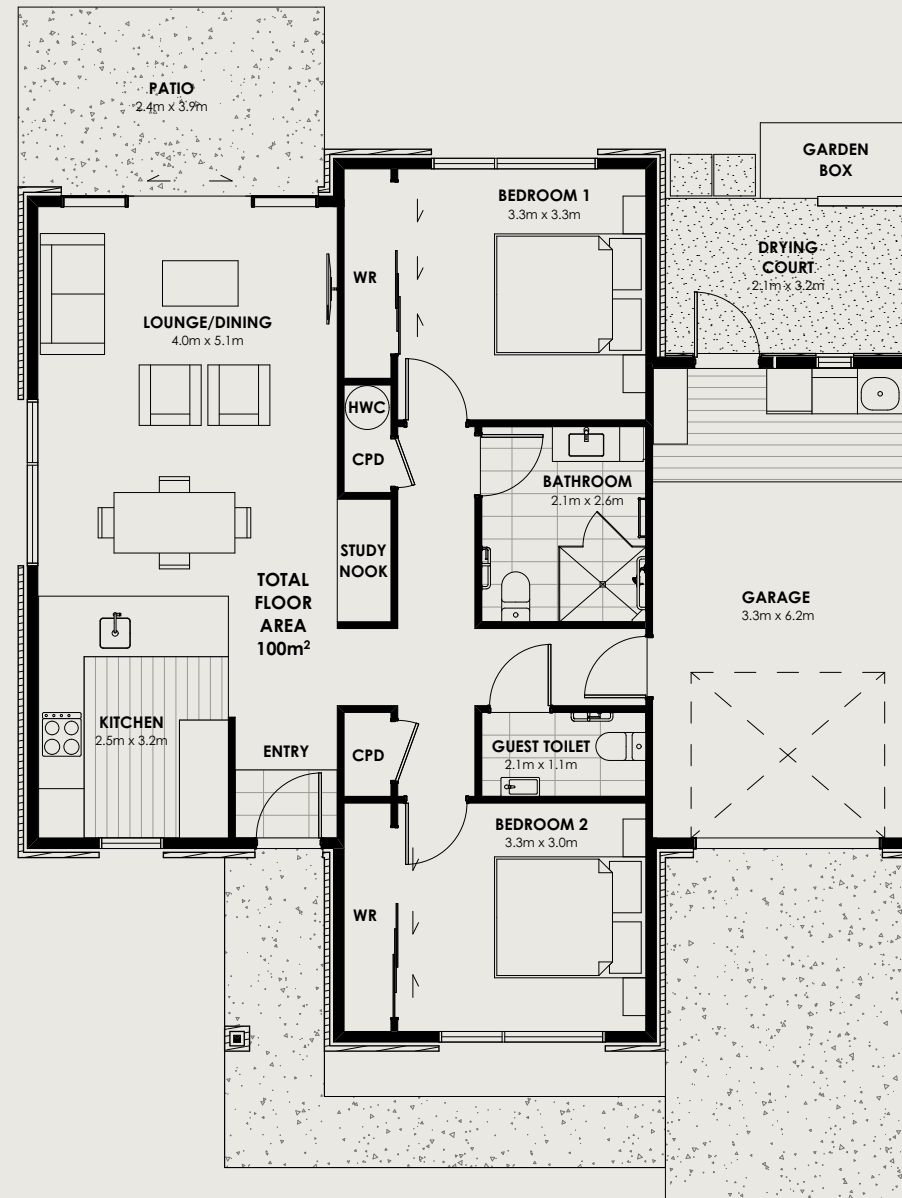
Disclaimer: In the following pages, images are indicative only. All efforts have been made to ensure accuracy of information at the time of print. Changes may be made during the development process and plans are subject to change without notice.

Villa A

Two bedroom villa with study area, guest toilet, kitchen entrance

Floor area: 100m²

Villas: 1, 2, 3, 4, 8, 10, 13, 15, 20, 21, 23, 26, 28, 32, 33, 34, 35, 38, 47, 48



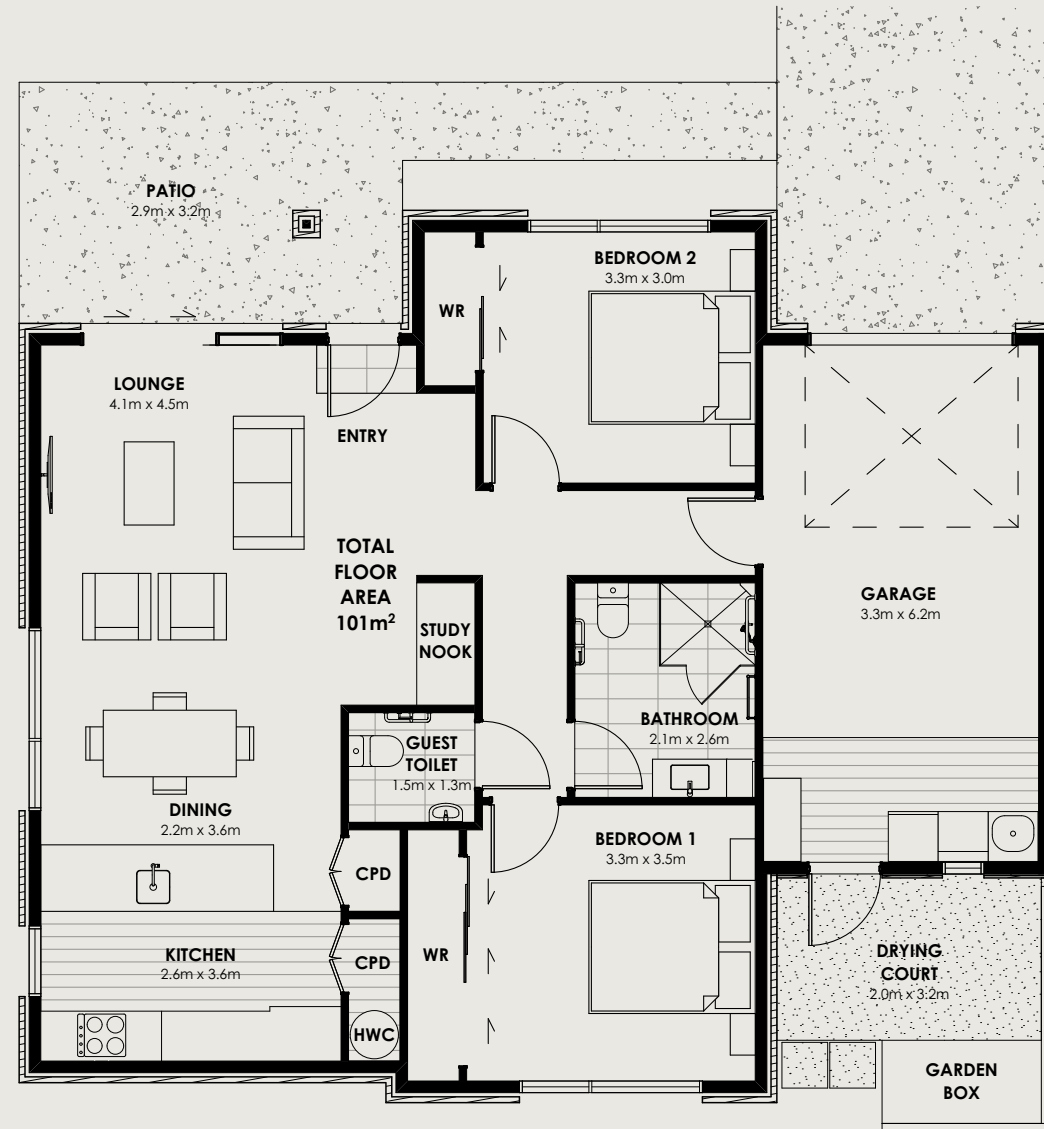


Villa B

Two bedroom villa with study area, guest toilet, lounge entrance

Floor area: 101m²

Villas: 5, 7, 11, 12, 16, 18, 24, 25, 29, 31, 36, 43, 45, 50, 51, 52, 53



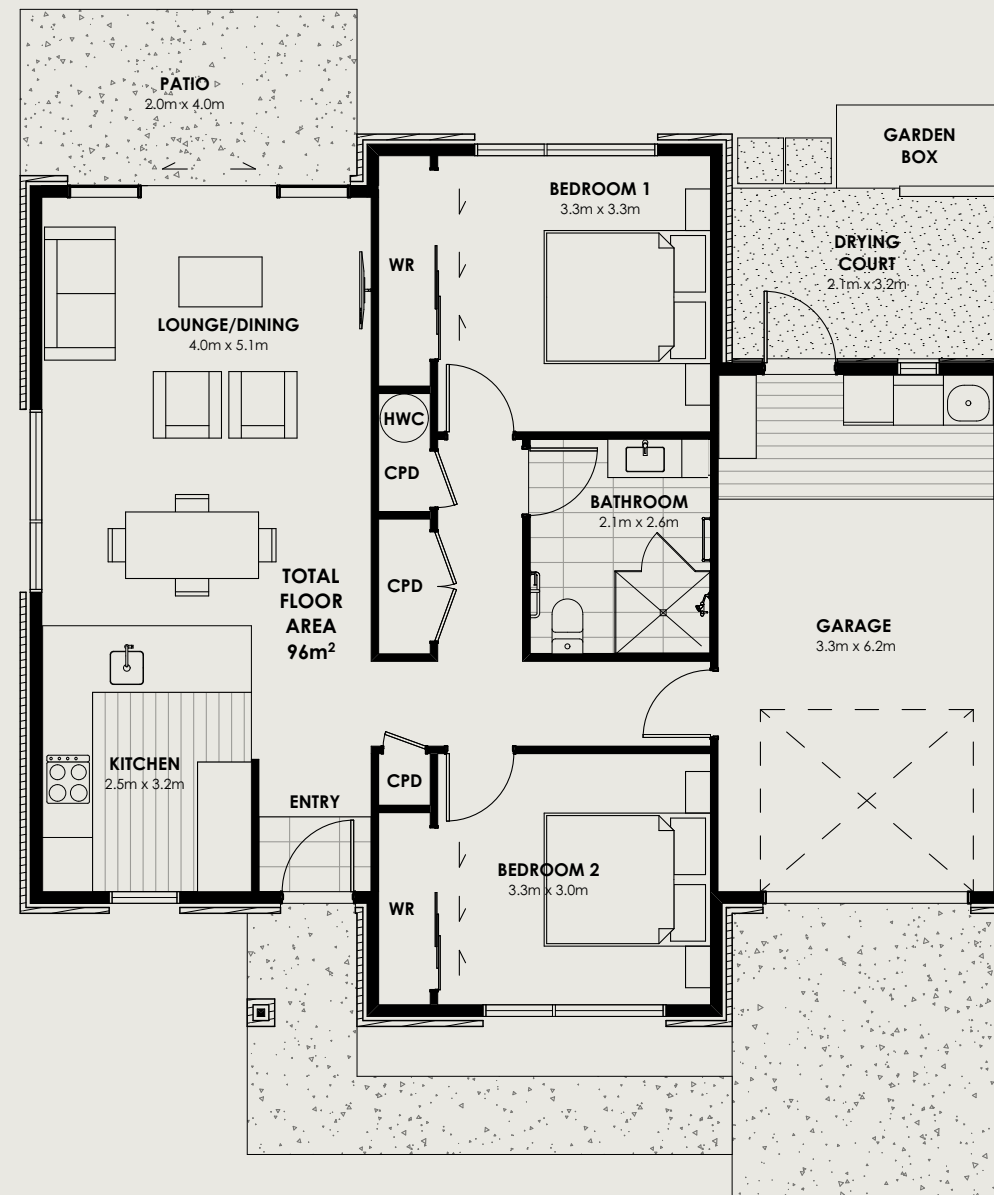


Villa C

Two bedroom
villa, kitchen
entrance

Floor area: 96m²

Villas: 19, 40, 41, 42,
46, 49



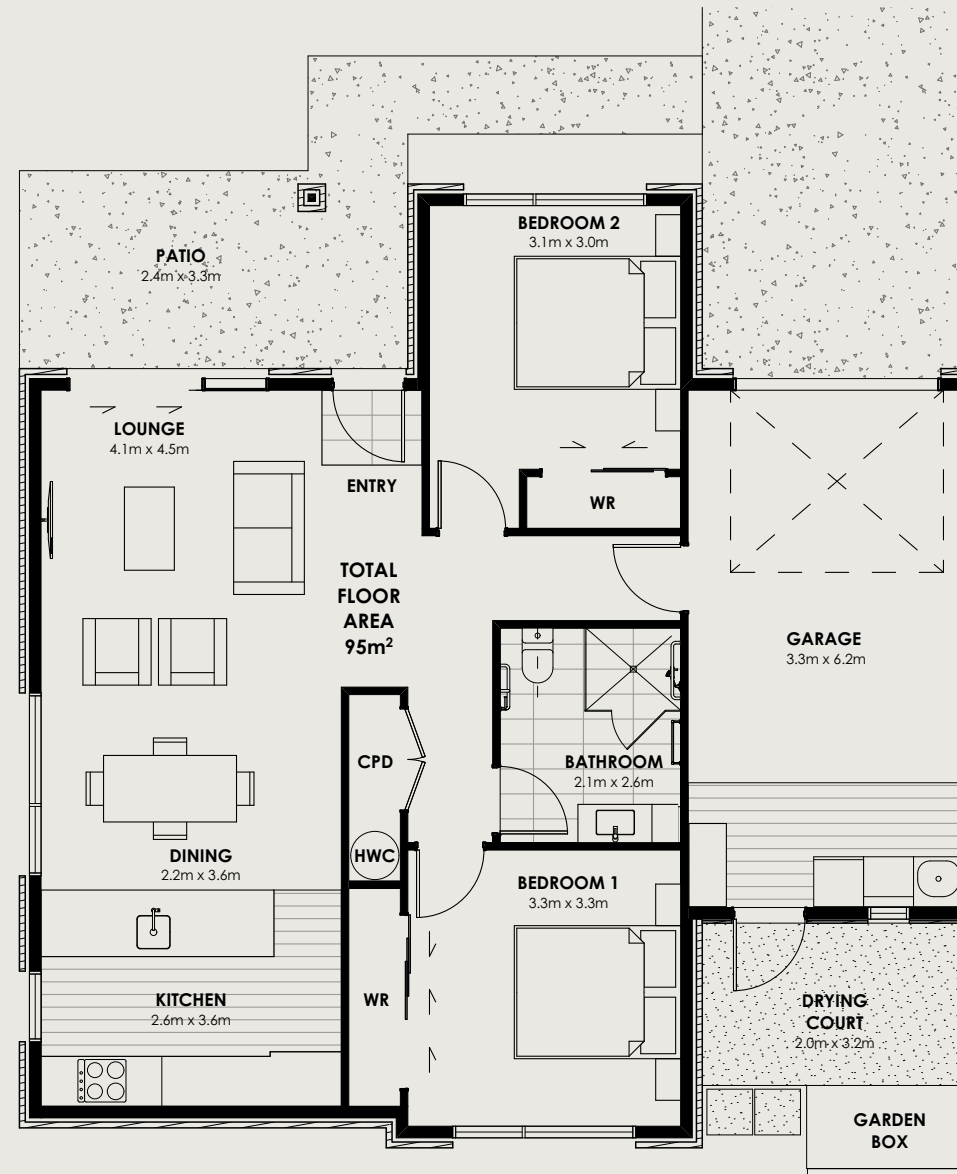


Villa D

Two bedroom
villa, lounge
entrance

Floor area: 95m²

Villas: 37





Villa E

Two bedroom
centre villa,
kitchen entrance

Floor area: 96m²
Villas: 9, 14, 22, 27



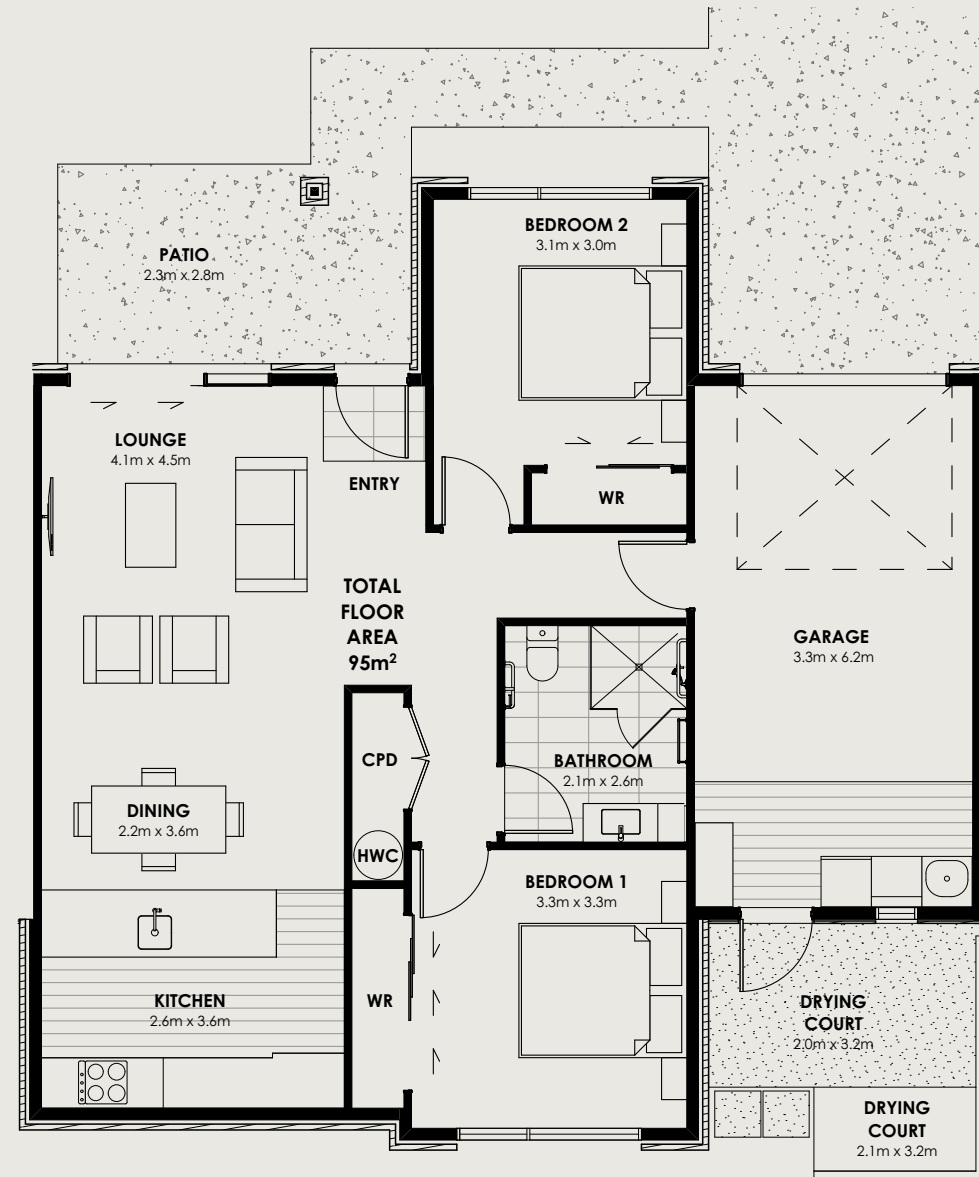


Villa F

Two bedroom
centre villa,
lounge entrance

Floor area: 95m²

Villa: 6



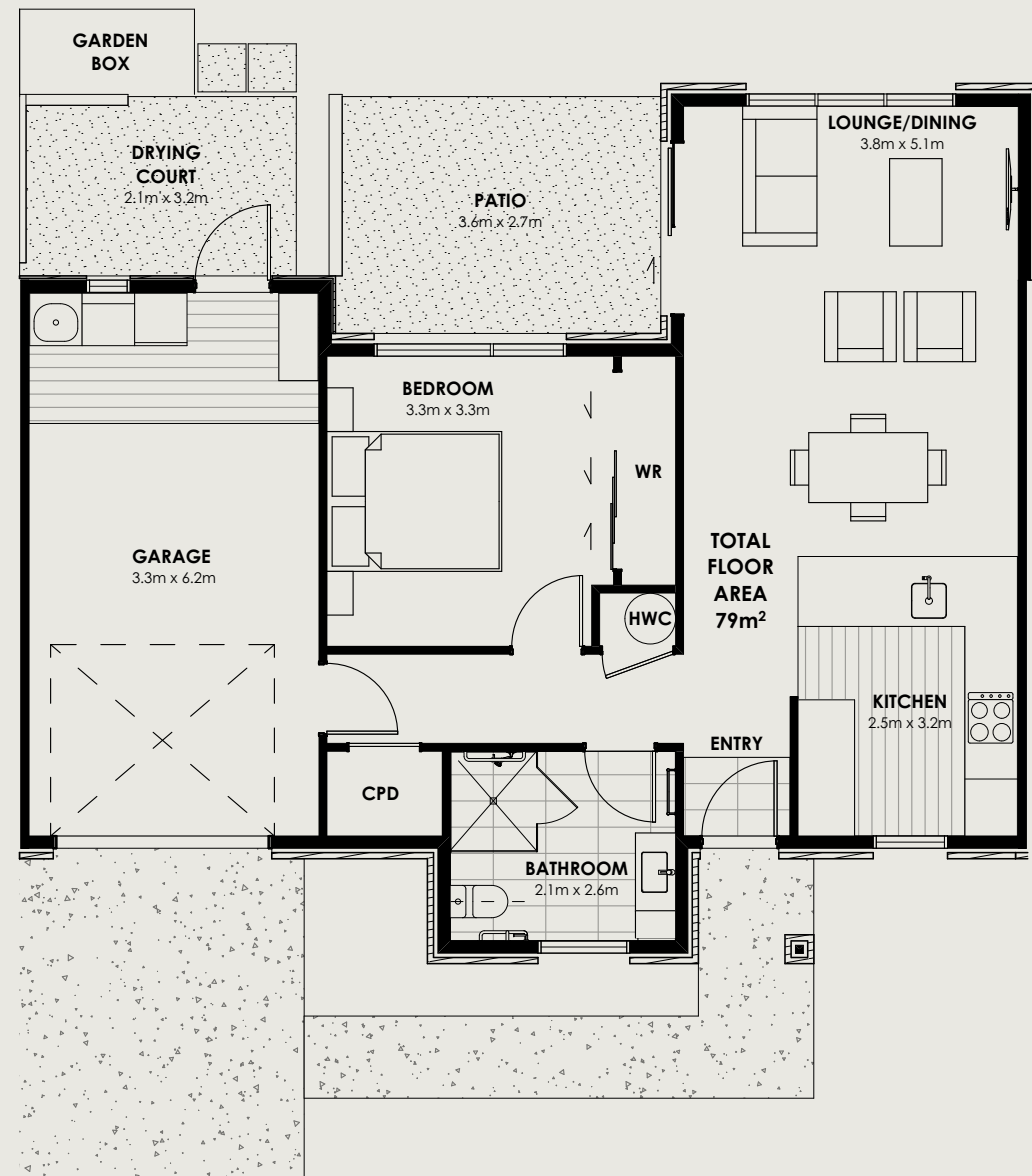


Villa G

One bedroom
centre villa,
kitchen entrance

Floor area: 79m²

Villa: 39



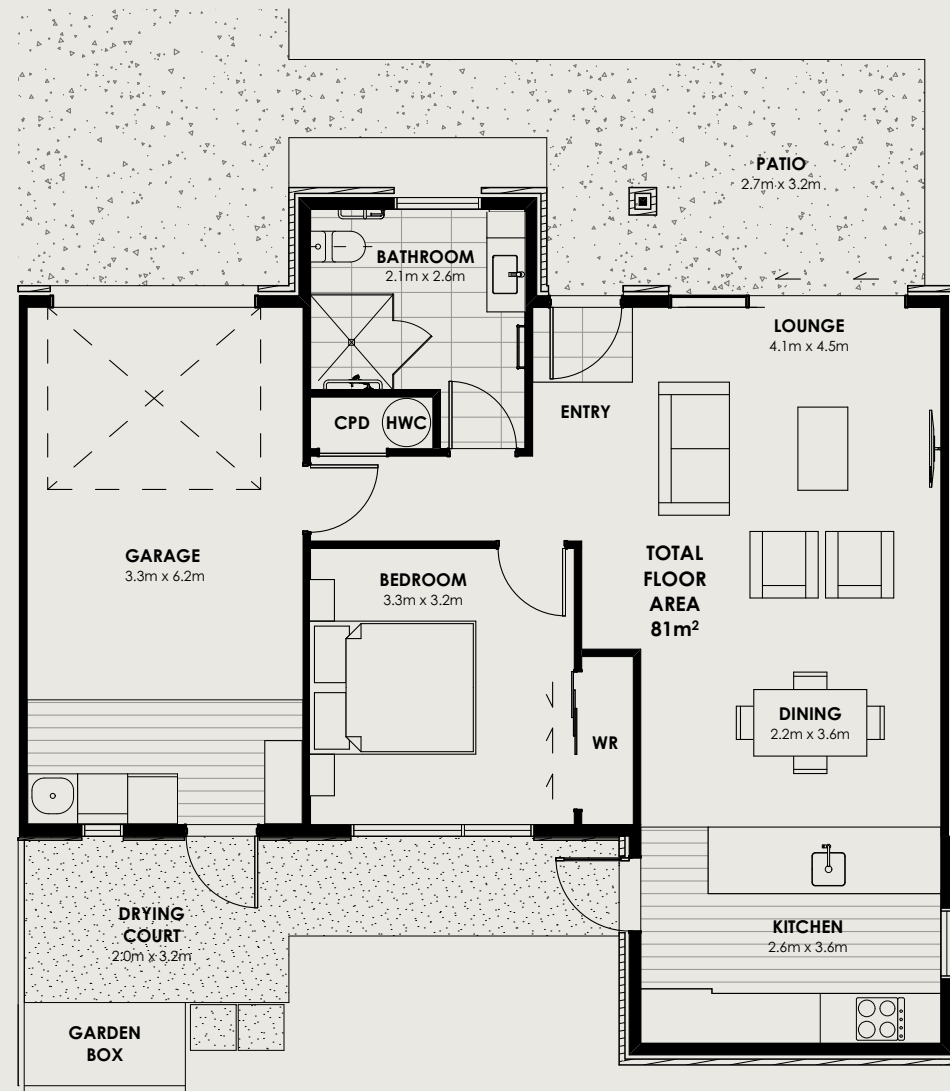


Villa H

One bedroom
centre villa, lounge
entrance

Floor area: 81m²

Villas: 17, 30, 44





Homestar means **warmer drier healthier**



Bupa Foxbridge Villas are targeting a Homestar certified rating

Homestar rates the health, comfort and efficiency of New Zealand homes and apartments.

A Homestar rating proves a house has been well designed and built.

It will cost less to run, be healthier to live in and better for the environment.

www.nzgbc.org.nz/homestar



At Bupa we are committed to building sustainable homes and communities. We want to provide our residents with warmer, healthier, and more comfortable homes that also use less water and energy, costing our residents less to live in.

Homestar is the comprehensive, national, independent system that rates the health, comfort and efficiency of New Zealand homes, on a scale of 6-10, at both the Design and Built phase.

A six Homestar rating or higher provides assurance that a home will be warmer, healthier and cost less to run than a typical new home. Homestar ratings are assessed by qualified professionals and certified by the New Zealand Green Building Council.

What features make your home more comfortable, efficient and healthier to live in?

- **Good levels of natural daylight**

- **Double glazed windows**

- **Higher levels of insulation**

A well designed and high performance building envelope improves your thermal comfort, reducing the demand on energy for heating and cooling. It also reduces condensation and mould related health issues, and noise transfer between tenancies.

- **Water efficient tapware**

- **LED lighting**

- **Heat pump in living area**

Efficient heating systems use less of our natural resources and reduce energy costs.

- **Environmental Choice certified and low VOC interior fitout items, including but not limited to: Carpet, paint and cabinetry**

VOC's (Volatile Organic Compounds) are carbon-based chemicals that are emitted as a gas at room temperature from many liquids and solids.

Although VOC's are very common in our indoor environments, it is better for our health to reduce the usage of products which expose us to these chemical gases.

- **Reduction in construction waste sent to landfill**

Construction waste makes up a large percentage of landfill in New Zealand. Our contractors are accountable for significantly reducing the construction waste that is sent to landfill.





Bupa Foxbridge Retirement Village

60 Minogue Drive, Te Rapa, Hamilton

(07) 851 8210

bupa.co.nz/foxbridge

Bupa Foxbridge is part of Bupa Health & Care.
Our purpose is to help people live longer, healthier, happier lives.

Disclaimer: Images in the booklet are indicative only. All efforts have been made to ensure accuracy of information at the time of print. Changes may be made during the development process and plans are subject to change without notice.